



# LESSON 15. MONTHS OF THE YEAR



Which month are you the busiest?

## What is a Calendar?

A **Calendar** is:  
a chart or series of pages  
showing the *days*, *weeks*,  
and *months* of a particular  
year, or giving particular  
seasonal information.

# 2016



**When is your birthday?**

# Study the Calendar

## Study the calendar

<b>2</b>	<b>0</b>	<b>1</b>	<b>8</b>
<b>January</b> SUN MON TUE WED THU FRI SAT 1 2 3 4 5 6 7 8 9 10 11 12 13 14 15 16 17 18 19 20 21 22 23 24 25 26 27 28 29 30 31	<b>February</b> SUN MON TUE WED THU FRI SAT 1 2 3 4 5 6 7 8 9 10 11 12 13 14 15 16 17 18 19 20 21 22 23 24 25 26 27 28	<b>March</b> SUN MON TUE WED THU FRI SAT 1 2 3 4 5 6 7 8 9 10 11 12 13 14 15 16 17 18 19 20 21 22 23 24 25 26 27 28 29 30 31	<b>April</b> SUN MON TUE WED THU FRI SAT 1 2 3 4 5 6 7 8 9 10 11 12 13 14 15 16 17 18 19 20 21 22 23 24 25 26 27 28 29 30
<b>May</b> SUN MON TUE WED THU FRI SAT 1 2 3 4 5 6 7 8 9 10 11 12 13 14 15 16 17 18 19 20 21 22 23 24 25 26 27 28 29 30 31	<b>June</b> SUN MON TUE WED THU FRI SAT 1 2 3 4 5 6 7 8 9 10 11 12 13 14 15 16 17 18 19 20 21 22 23 24 25 26 27 28 29 30	<b>July</b> SUN MON TUE WED THU FRI SAT 1 2 3 4 5 6 7 8 9 10 11 12 13 14 15 16 17 18 19 20 21 22 23 24 25 26 27 28 29 30 31	<b>August</b> SUN MON TUE WED THU FRI SAT 1 2 3 4 5 6 7 8 9 10 11 12 13 14 15 16 17 18 19 20 21 22 23 24 25 26 27 28 29 30 31
<b>September</b> SUN MON TUE WED THU FRI SAT 1 2 3 4 5 6 7 8 9 10 11 12 13 14 15 16 17 18 19 20 21 22 23 24 25 26 27 28 29 30	<b>October</b> SUN MON TUE WED THU FRI SAT 1 2 3 4 5 6 7 8 9 10 11 12 13 14 15 16 17 18 19 20 21 22 23 24 25 26 27 28 29 30 31	<b>November</b> SUN MON TUE WED THU FRI SAT 1 2 3 4 5 6 7 8 9 10 11 12 13 14 15 16 17 18 19 20 21 22 23 24 25 26 27 28 29 30	<b>December</b> SUN MON TUE WED THU FRI SAT 1 2 3 4 5 6 7 8 9 10 11 12 13 14 15 16 17 18 19 20 21 22 23 24 25 26 27 28 29 30 31

1. How many days are there in a week?
2. How many days are there in a month?
3. How many weeks are there in a month?
4. How many months are there in a year?
5. What do we use a calendar for?

Answer the questions in complete sentences.

# Grammar – Talk about numbers



**Cardinal numbers** tell "how many." They are also known as "counting numbers," because they **show quantity**.

**Ordinal numbers** tell the **order of things in a set**—first, second, third, etc. They only **show rank or position**.

## How do we use the cardinal numbers?

### MONEY:

A: How much does it cost?

B: It's \$20.

### AGE:

A: How old are you?

B: I'm 11 years old.

### QUANTITY:

A: How many months are there in a year?

B: There are 12 months.

## How do we use the ordinal numbers?

### ORDER/POSITION:

When you run in a race you can be 1<sup>st</sup>, 2<sup>nd</sup> or 3<sup>rd</sup>  
**That is the order you finished, number 1, 2 or 3**

When you want to wash your hands you first open the tap, secondly rub on soap and thirdly wash your hands.  
**That is the order of the steps to wash your hands.**

# Activity 1

Arrange the months in correct order.

SEPTEMBER

OCTOBER

FEBRUARY

APRIL

JANUARY

DECEMBER

NOVEMBER

JULY

MARCH

JUNE

AUGUST

MAY

# Activity 2

## Ordinal Numbers

But what about when there are more than 3 people in a race, or more than 3 steps to do something? Complete the table.

1 <sup>ST</sup>	First	11 <sup>th</sup>	Eleventh
2 <sup>nd</sup>			Twenty First
3 <sup>rd</sup>			Thirty Second
4 <sup>th</sup>	Fourth		Forty Third
5 <sup>th</sup>			Fifty Fourth
6 <sup>th</sup>			Sixty Fifth
7 <sup>th</sup>	Seventh		Seventy Sixth
8 <sup>th</sup>		87 <sup>th</sup>	Eighty Seventh
9 <sup>th</sup>			Ninety Eighth
10 <sup>th</sup>			Hundred Ninth

### Follow these Patterns!

Most times you add **-th** to the number.

Numbers ending in **-y**, will be changed to **-ieth**.

Numbers ending in **-t**, add only **-h**.

# Role Play

Read the dialogue with your teacher.

**Susan:** When is your birthday?

**Jon:** My birthday is on September 5th. When is yours?

**Susan :** My birthday is on Friday.

**Jon :** This Friday?

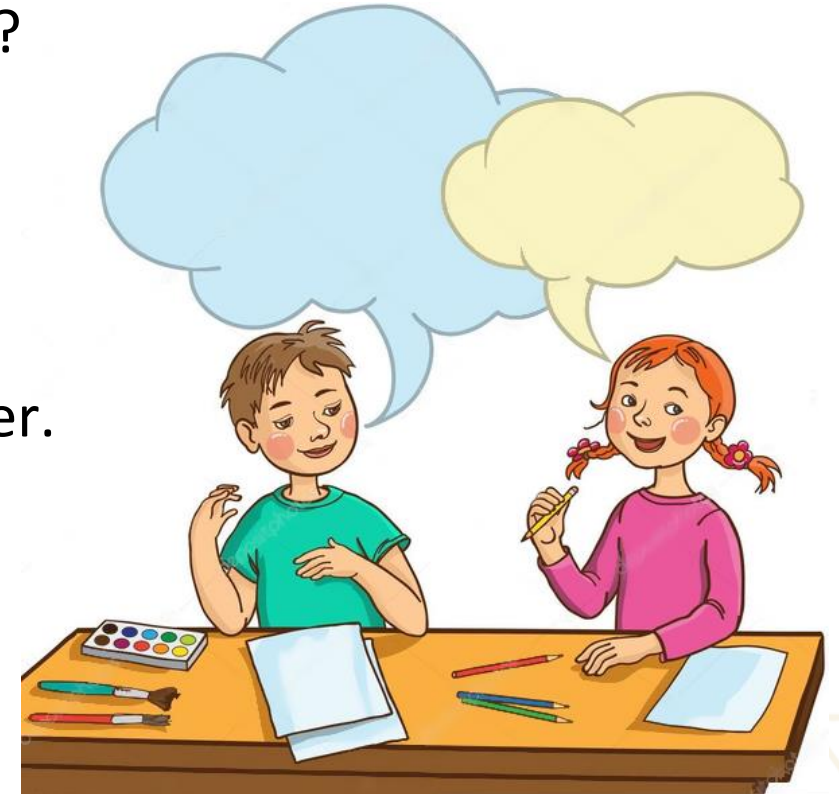
**Susan :** Yes, in July 15<sup>th</sup>.

**Jon :** That's my dad's birthday!

**Susan :** I thought your dad's birthday was in the winter.

**Jon :** No. My mom's birthday is on January 1<sup>st</sup>.

**Susan :** Oh, wow! Her birthday is on New Year's Day.  
That's fun!



Use the pattern above to talk about birthdays of your family members.



Say whether the statements are **TRUE** or **FALSE**. If it's false, tell your teacher why.

1. Jon's birthday is in September.
2. Susan's birthday is today.
3. According to the dialogue it is June.
4. Jon's dad's birthday is next month.
5. His dad's birthday is in winter.
6. His mom's birthday is on Christmas Day.



## Expressions of **TIME**




PAST	PRESENT	FUTURE
Yesterday	Today	Tomorrow
The day before yesterday	At the moment	The day after tomorrow
Four days ago	Right now	Three days from now
Last year/month/week	This week	Next week/month/year
Few years/months/weeks ago	This year	In a few days

**Use each of the expressions to talk about your activities.**

# Activity 3

## Pam's Calendar

1. It is the 10<sup>th</sup> of **October**. Look at the calendar and name:

Monday	Tuesday	Wednesday	Thursday	Friday	Saturday	Sunday
	1 	2	3 	4 	5 	6 
7	8 	9 	10 <b>Pam is here.</b>	11	12 	13 
14 	15 	16	17 	18 	19 	20 
21	22 	23 	24	25	26 	27
28	29 	30	31 			

**Answer the questions:**

1. How many days are there in October?
2. What is the shortest week?
3. How many Sundays are there?
4. What did Pam do last week?
5. What has she already done this week?
6. What did she do two days ago?
7. How often does she paint?
8. When will pam celebrate her birthday?

# Critical Thinking

month \_\_\_\_\_ year \_\_\_\_\_

SUN	MON	TUE	WED	THUR	FRI	SAT
1	2	3	4	5	6	7
8	9	10	11	12	13	14
15	16	17	18	19	20	21
22	23	24	25	26	27	28
29	30	31				

- Talk about your favorite month.
- Mark the dates which are important to you. Tell your teacher about what you do/did on those dates.

## Express Yourself

1. What day is it today?
2. What month is it now?
3. What day was it yesterday?
4. What day is the day after tomorrow?
5. What day was the day before yesterday?
6. Which days of the week do you have an English class?
7. Which month does your school begin? Which month does it end?
8. What is your favorite part of the week? Why?
9. What is your least favorite part of the week? Why?
10. Describe what you do on weekends.



# The End