

Lesson 16 - Mobility & Transportation

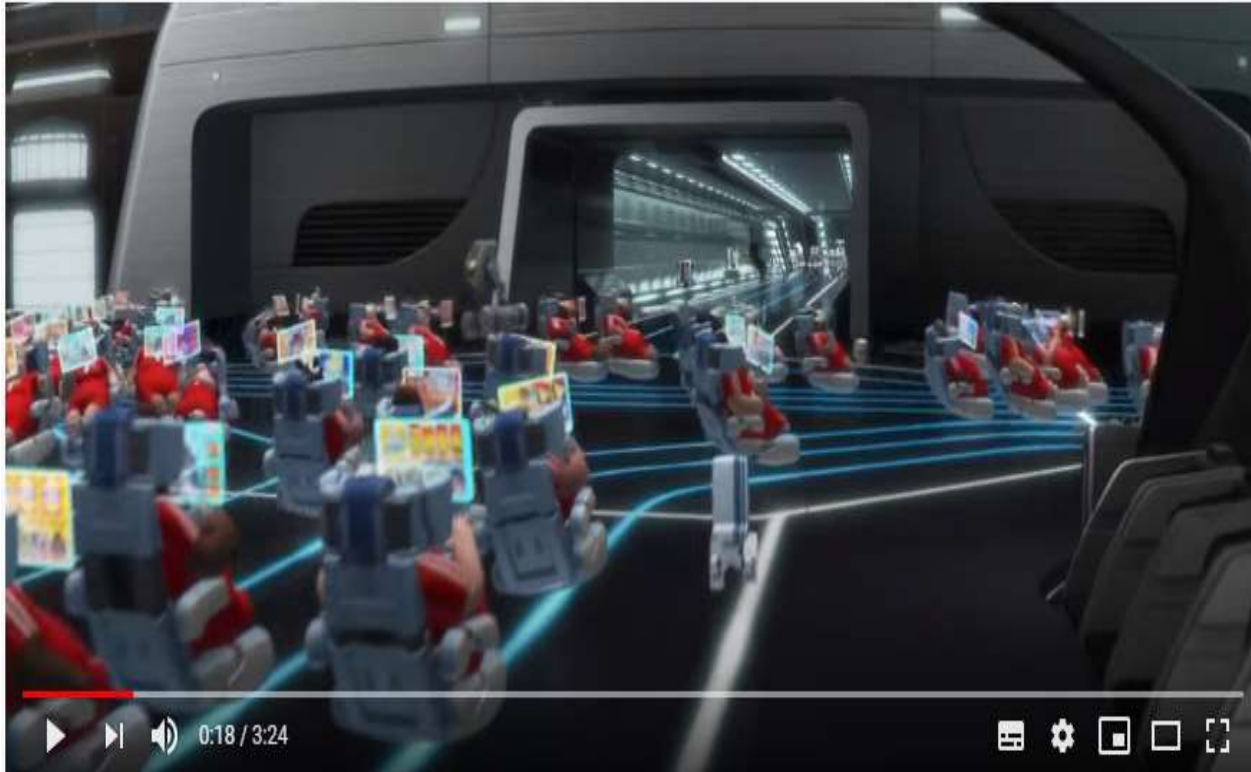
Lesson 16. Mobility & Transportation

Learning Objectives

After this lesson, students will be able to:

- Differentiate mobility and transportation.
- Explore culture of Japan with regard to punctuality.
- Use appropriate phrasal verbs and vocabulary related to mobility and transportation.
- Use in, on, and by accurately when talking about transportation.
- Explore how mobility assistance is used people with disability.
- Practice pronunciation of aI sound.

Lesson 16. Mobility & Transportation



<https://www.youtube.com/watch?v=s-kdRdzxdZQ>

Observe these following things when watching the clip:

1. The mode of transport depicted in the video.
2. The physical appearance of the people in the video.
3. Their movement/their mobility.

Lesson 16. Mobility & Transportation

In A Nutshell

Mobility is a term used to describe something's ability to move or be moved. Mobility is not synonymous with transportation. Transportation is basic: moving stuff and people.

To have mobility is to have access. Getting to places necessary for living a healthy life – your job, school, doctor's offices, community centers, parks – is possible.

But living by a bus that comes once an hour isn't mobility. And owning a car in a city with congested highways isn't mobility, either.

So mobility isn't just having access to one mode of transportation. Mobility is having transportation options, and the quality of those options.

Ponder this!

What do you think of the quality of transportation in your country in terms of time, affordability and safety?

Lesson 16. Mobility & Transportation

Read the text and discuss the highlighted words.

Train companies in Japan are **renowned** for their **punctuality**. Many people claim Japan's rail network is the **envy** of the world. Most rail companies around the world apologize to passengers for delayed trains or cancellations. However, the operators of Tokyo's Tsukuba Express line apologized for one of its trains leaving 20 seconds too early on Tuesday. According to the apology, the high-speed train pulled out of a station 20 seconds earlier than scheduled due to staff members failing to check the departure **timetable**. Even though the company issued the apology, it said it had not received any complaints from passengers. Bosses of the Tsukuba Express said the train crew did not **sufficiently** check the departure time and failed to accurately perform the departure operations. The company made a statement in Japanese on its website. It "deeply" apologized for the "**severe** inconvenience" caused to passengers who missed the scheduled train, even though the next train was just four minutes later. Many people tweeted about the apology. One tweet read: "Tokyo train company's apology for 20-second-early departure is one of the best things about Japan." A UK **commuter** tweeted: "They apologize for being 20 seconds early, and yet you don't get an apology from any major UK train company until they're over 2 hours late."

Lesson 16. Mobility & Transportation

Reading Comprehension Questions:

1. What are train companies in Japan known for?
2. How do the other countries feel about Japan's rail network?
3. What are the operators of Tokyo's Tsukuba Express Line apologizing for?
4. What really caused the "inconvenience" happened that day?
5. How much longer did passengers have to wait for the next train?
6. What did a Tweeter say was one of the best things about Japan?



Free Response

- a. Have you been on a train before? How was your journey? Was it pleasant?
- b. Would you feel the same inconvenience if your transport is 20 minutes early?
- c. Are the trains and buses and other public transport in your country punctual? Why or why not?
- d. Are you envious of the transport system in Japan or in other countries?
- e. What would you like to change in the transport system in your country?

Lesson 16. Mobility & Transportation

Categorize the modes of transport according to the verbs/phrasal verbs they can be used with. Some modes of transport can be used with more than one verb
Can you mention any other mode of transport that's not listed here?

Ride	Take	Get In	Get On	Catch	Board
bike			bike	plane	

HINTS:

Use "ON" for:

Bus

Plane

Train

Ship

Tram

Bike

Use "IN" for:

Car

Taxi

Limo

Truck

Lesson 16. Mobility & Transportation

Types of Mobility Assistance for people with disability.



Building Wheelchair Ramp



Bus Wheelchair Ramp



Embossed Braille On Elevator



Footpath With Tactile Paving



Dropped Curb



Priority Seats



Wheelchair lift

Lesson 16. Mobility & Transportation

Type Of Assistance	What The Assistance Is About	Which Special Needs Does It Help?	Location Of Assistance (Where It Can Be Found)
Building Wheelchair Ramp	An inclined plane installed in addition to or instead of stairs. It allows wheeled objects to easily access buildings/areas of different height	Vision/visual – hearing - <u>movement/physical disability - elderly people/pregnant women</u>	Outside of buildings
?	Designated in public transport vehicles to allow elderly, disabled, pregnant women and the injured to ride public transport	?	?
?	The raised dots signify the number of the buttons. People with disability touch them to know what numbers they are	?	?
?	A system of textured ground surface indicators found on footpaths to assist pedestrians who are vision impaired	?	?
?	A lowered section of pavement to make it easier to get from the pavement to the road or for vehicles to drive across	?	?
?	An inclined plane used when getting on the bus	?	?
?	A fully powered device designed to raise a wheelchair and its occupant in order to overcome a vertical barrier	?	?

Lesson 16. Mobility & Transportation

Match each terminology on the right with its correct definition on the left

1. a place on a bus route where buses stop to discharge and take on passengers
2. a long narrow passage
3. vehicles or pedestrians traveling in a particular locality
4. a number of vehicles blocking one another until they can scarcely move
5. a person who travels by foot
6. a device that controls the way into or out of a building, room, or area of land, especially one that you have to pay to enter.
7. goods that are carried from one place to another, by ship, aircraft, train, or truck, or the system of transporting these goods
8. the movement of goods or people from one place to another
9. a small road next to a busier, faster road, that you use to drive to homes and shops
10. to travel regularly between work and home

- a. traffic jam
- b. commute
- c. bus stop
- d. freight
- e. service road
- f. pedestrian
- g. aisle
- h. transit
- i. traffic
- j. turnstile

Lesson 16. Mobility & Transportation



Listening 16.1

Listen to the recording and fill in the blanks with the matching correct word(s) from the recording

1. By 2030 dramatic changes will have _____ areas
2. In the future, it is predicted that our commuting trip could also be _____ and _____
3. The recording predicts that the way future transportation operates would be advantageous for not only _____ but also _____
4. It might no longer be relevant to own a driving _____
5. The way a car functions in the future would be dramatically different because cars would be electric, powered, _____, _____, _____.
6. Cars are predicted to also be able to _____ prescriptions
7. The recording claims that such future will only be obtainable through an _____ degree of _____



Is the future prediction in the recording something you wish to turn out to be true? Why?
Can you think of how it would possibly negatively affect human beings?

Lesson 16. Mobility & Transportation

Prepositions related to travel and transportation.

Using the preposition By

When we talk about general ways to travel we always use the preposition 'by'. For example – We travel by car ,by train , by car, by bus, by plane and so on. We can also use the preposition 'by' to refer to the transportation environment or the surface for example, by air, by land, by sea, by rail.

Using the preposition In

When we talk about specific transport vehicles we use the preposition 'in'. If you can sit inside the vehicle we use 'in'. For example – In a car , In a truck , in a helicopter , in a taxi, in a rowboat.

Using the preposition on

When we talk about specific transport vehicles especially on which one can stand or walk on a vehicle, we use the preposition 'on'.

For example – We go on a plane , we go on a ferry , we go on a ship , on a Train , on a Bicycle, on a Motorbike , (the basic mode of travel – on foot).

NOTE: Also when we talk about sitting on animals we always use the preposition on or onto, for example – We get on / onto a horse, camel, elephant etc.

Lesson 16. Mobility & Transportation

Fill in the blanks with the correct preposition.

1. I met a very nice woman ___ the bus I took this morning.
2. There were no vehicles allowed at the mountainside, so we got ___ a horse.
3. I will call you back as I am ___ a taxi right now.
4. I usually travel to Delhi ___ air.
5. The children go to school ___ van.
6. ___ my flight last night , there was an old man who was very unwell.
7. I always travel ___ bus to work.
8. The kids were excited to be ___ a helicopter.
9. They prefer to go ___ bike rather than ___ foot.
10. You can buy a ticket and go ___ train.
11. When they want to go to the USA. They went ___ plane.
12. More people now go ___ their cars than ___ trams.

Lesson 16. Mobility & Transportation

Create a coherent story of Siena's journey to Canada using the provided story prompts & phrasal verbs
An example has been provided



On a Sunday morning, Siena is travelling to Canada. Her father is **dropping Siena off** at the front of the terminal gate at the airport



After that, Siena (**check in**)
Story prompts:

- She is quite late
- The line is quite long



Once done (**check in**), she hangs out in the waiting lounge (**wait for**) her departure flight
Story prompt:

- Killing time by being online



Unfortunately, flight delays often happen. She gets... (**hold up**) for an hour
Story prompt:

- Sleeping while waiting



An hour delay has passed, Finally, (**get on**) the plane
Story prompt:

- Board the plane with the rest of the passengers



Despite an hour delay,..... At last, (**get off**) the plane
Story prompts:

- Smooth enjoyable flight
- Get out off the plane as soon as it lands

Lesson 16. Mobility & Transportation

Idioms With Transportation Modes In It



Run a tight ship

Keep firm control of the way your business or organization is run, so that it is well organized and efficient

Ex:

I am trying to **run a tight ship** at work but my team mates have not taken me seriously yet

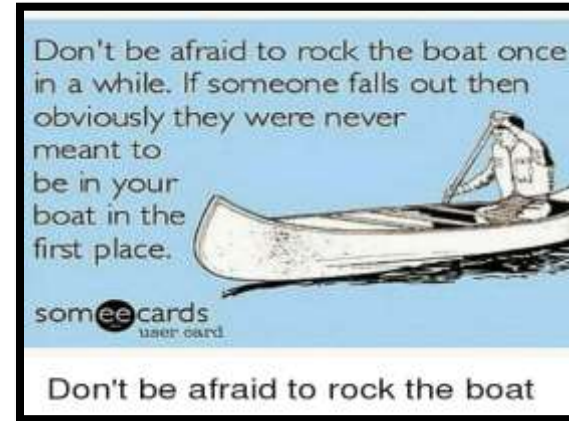


To Throw Someone Under The Bus

Exposing someone to an unpleasant situation often for one's gain

Ex:

She **threw her** business partner **under the bus** when the deal fell through



Rock The Boat

If you rock the boat, you do something that upsets a situation and causes problem.

Ex:

Don't **rock the boat** until the negotiations are finished, okay!



Train Wreck

A disastrous situation, occurrence/someone who's having a hard time in life

Ex:

My friends sister is a **train wreck**, after her husband died.

Lesson 16. Mobility & Transportation

Discussion Points:

1. What do you think is the most reliable form of transportation? Why?
2. What transportation problems are there in your country?
3. Are you happy with the transportation services in your country? Which part of our public transportation that you think requires dire changes?
4. Which transportation mode has the worst effect on our ecological environment? State your reasons!
5. What do you think will be the next big breakthrough in transportation?
6. Using your own language/words, define what mobility is all about!
7. How much more work is there left to be done, so that people with disabilities can have the same level of comfort and accessibility to mobility?
8. Do you think able-bodied people have been taking existing road facilities for granted? Can you name the things that feel “ordinary” to us but is actually considered to be a luxury for people with disabilities?

Lesson 16. Mobility & Transportation

Tongue Twister Time!

**Ride a Black Bike
Friday Bike on a Black
Friday Bike Ride**



The End